



Retropole, LLC
2625 Ackers #110
Irving, TX 75061
972-438-9322
www.retropole.com

LIMITED WARRANTY & LIMITATION OF LIABILITY

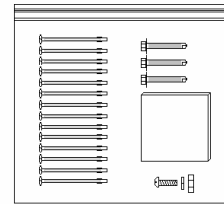
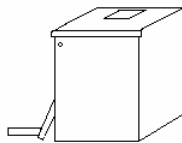
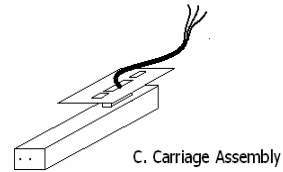
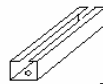
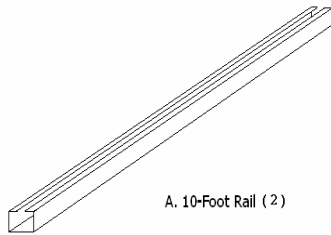
Retropole LLC will repair or replace (at its option) any part of the equipment delivered hereunder which under normal and proper use proves to be defective in workmanship or material within one year from date of shipment by Retropole LLC ("Warranty period"). The correction of such defects by repair or replacement shall constitute fulfillment of all Retropole LLC obligations with respect to the equipment sold hereunder. The liability of Retropole LLC under this warranty for any loss or damage to the equipment or to the persons or property allegedly caused by the equipment, whether based on contract, strict Tort liability, negligence or warranty shall not in any case exceed cost of correcting defects in the equipment as herein provided and upon the expiration of the warranty period all such liability shall terminate. Retropole LLC shall not be liable for special indirect, incidental or consequential damages of any kind.

Retropole LLC WILL NOT ALLOW CHARGES FOR LABOR, MATERIALS, ETC. THAT DOES NOT HAVE PRIOR WRITTEN APPROVAL BEFORE SUCH WORK IS IMPLEMENTED.

NOTE: Catalog pages are for reference. Specifications and dimensions may change without notice. The foregoing warranty is exclusive and in lieu of all other warranties of quality whether written, oral, express or implied, including, but not limited to, any warranty of merchantability or fitness for a particular purpose.

WARNING: Every effort has been made to provide products that are safe as possible: However, lighting equipment requires high voltage current to operate and often requires elevated mounting for desired illumination. Responsible individuals should be made aware of the following: Improper selection, installation, operation, servicing, removal and disposal of lighting products may create serious hazards including fire, explosion, shock, laceration of skin, impaired vision, falling objects and environmental contamination. Reduce risks by using the guidance of licensed professionals throughout the product life cycle, by conforming to applicable codes and safety practices and by following individual product, component and accessory safety instructions and labels. We offer this in the interest of safety for our customers who may not be aware of the potentially high risk involved in the misuse of these products.

Catalog #	Description	Quantity
RGR-10	10' Guide Rail (a)	2
RHU-1	Head Unit (b)	1
RCA-1	Carriage (c)	1
RC-1	Rain Cap (d)	1
RDM-1 & RDME-1	Drive & Enclosure (e)	1 each
HK-1	Hardware	1



***RETROPOLE SHOULD BE INSTALLED BY A LICENSED ELECTRICIAN CERTIFIED AND TRAINED FOR INSTALLATION BY RETROPOLE, LLC**

***ALWAYS FOLLOW OSHA SAFETY GUIDELINES**

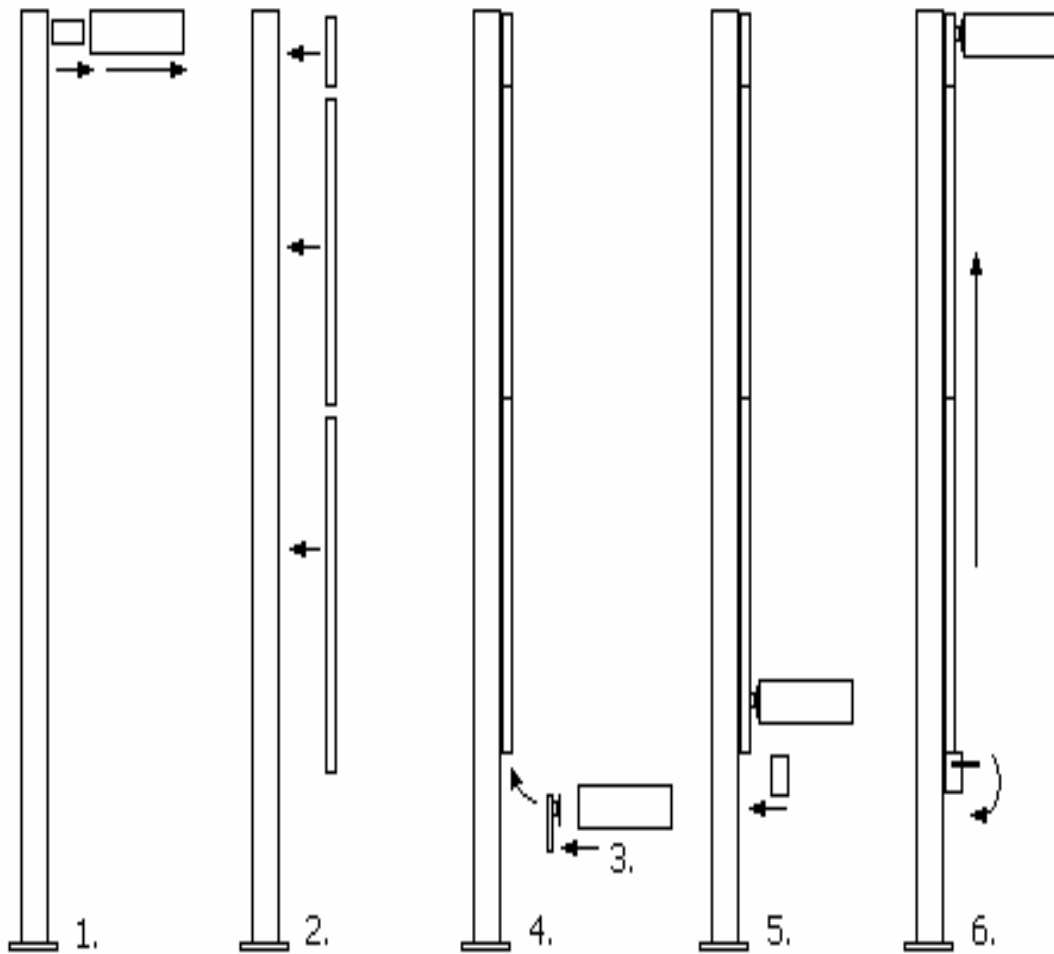
***WEAR HARD HAT, SAFETY GLASSES AND GLOVES**

***ALWAYS DE-ENERGIZE CIRCUITS BEFORE PERFORMING WORK**

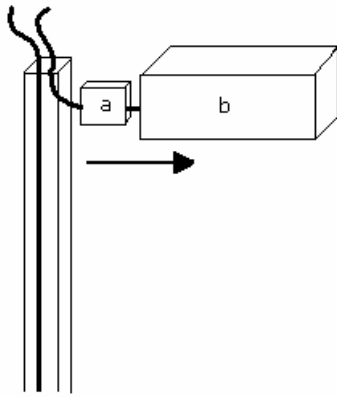
*Should you have any comments, missing parts or problems with installation of this unit please feel free to visit www.retropole.com 24 hours a day FOR TRAINING AND SUPPORT. During business hour you can call 972-438-9322 and a tech support rep will assist you.

Quick Overview

1. Remove existing light fixture and support arm.
2. Mount all rail sections.
3. Join carriage to existing light head.
4. Lace cable and insert Carriage/lighthead assembly.
5. Mount Drive Mechanism/enclosure assembly.
6. Attach cable and Raise Fixture.

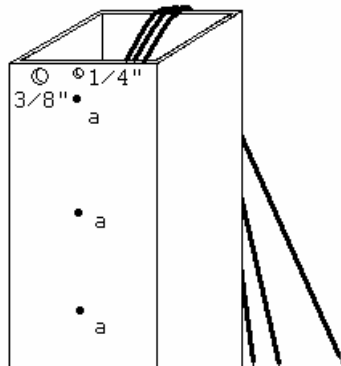


1.



1. Disconnect pole wires from fixture wires. Unbolt fixture (b) and carefully lower to the ground. The support arm (a) may be discarded, it will not be reused.

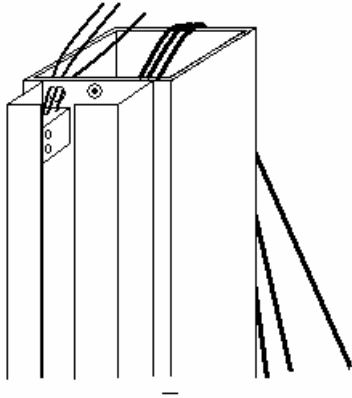
2.a



2.a Using the head unit (RHU-1) as a template, mark and drill 3/8" wiring hole. Insert head unit wires thru wiring hole and mark and drill 1/4" bolt hole and three 3/16" mounting holes(a). Install mounting screws.

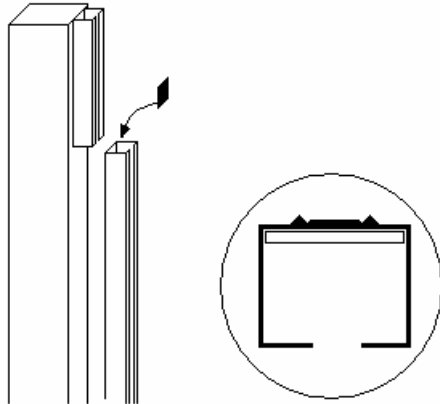
Note- head unit should be level and flush with top pole.

2.b



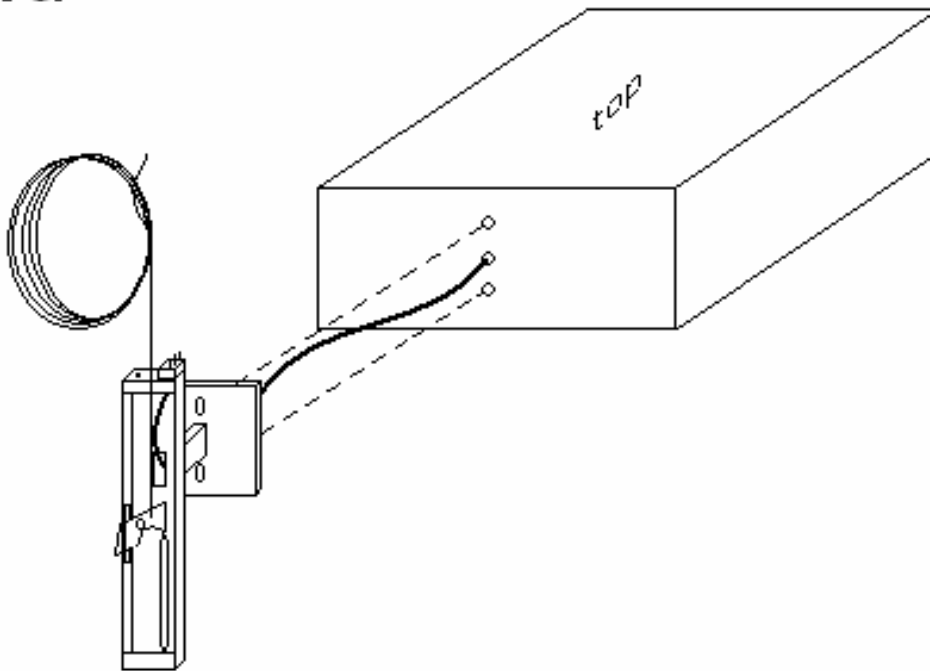
2.b Make up wires for desired voltage. Using a tie-wrap or similar fastener, support pole wires to one of the mounting screws inside the top of the pole. This will keep the weight of the pole wires from pulling on the contact. Put pole cap back on pole, do not install Retropole cap yet.

2.c



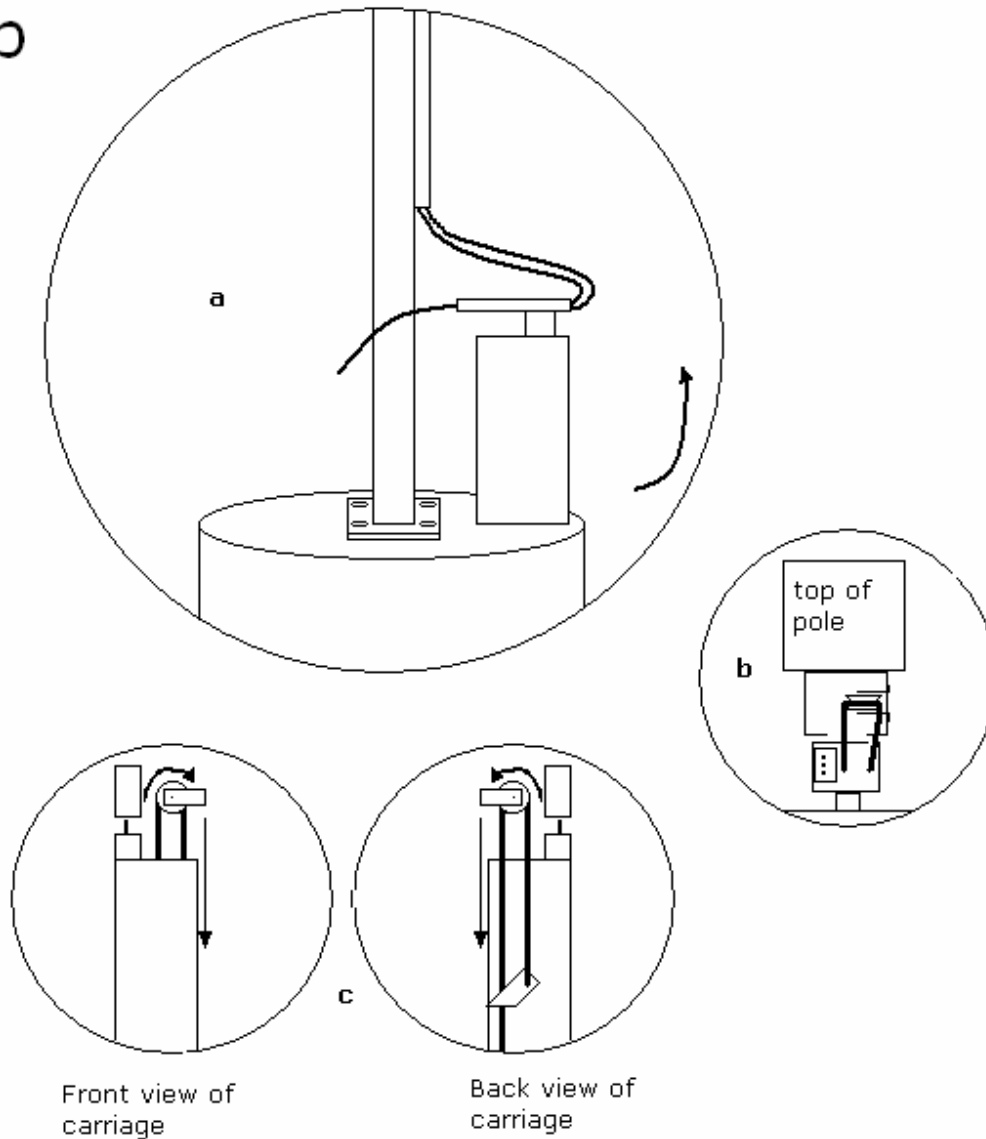
2.c Using the alignment tool provided in the install kit, align the next rail (RGR-10) with the Head Unit. This is done by pushing the alignment tool to the back of the joining rails. Level, mark holes, drill and mount. Perfect alignment is crucial to smooth operation. After the mounting screws are installed, remove alignment tool and check all inside surfaces of the joining rails for accuracy. Repeat this step for all additional sections of rail until desired box height is achieved.

3.a



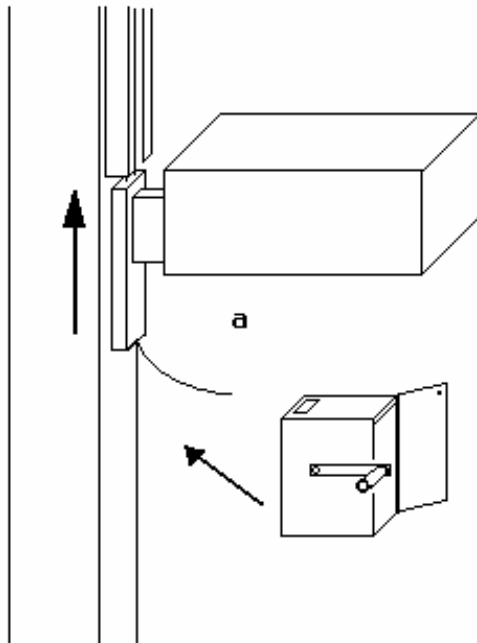
3.a Using the 3/8" bolts, nuts and washers provide in the install kit, bolt the carriage(RCA-1) to the fixture that wash remove from the pole. The slotted holes will accommodate most fixture, but in some rare instances drilling new holes may be required. Make up wires in fixture for desired existing pole voltage. Clean the lens and close the fixture.

3.b

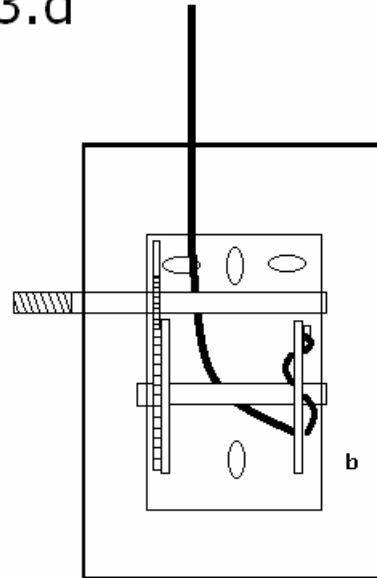


3.b Bring the fixture/carriage assembly close to the bottom (a) of the last rail(preferably resting on the pole base). Take the end of the drive cable up the center of the rail. Thread cable up and between pulley and contacts in the head unit, over the pulley and back down the right side of the rail (b). Thread the cable through the carriage making sure to go behind the brake assembly(c).

3.c



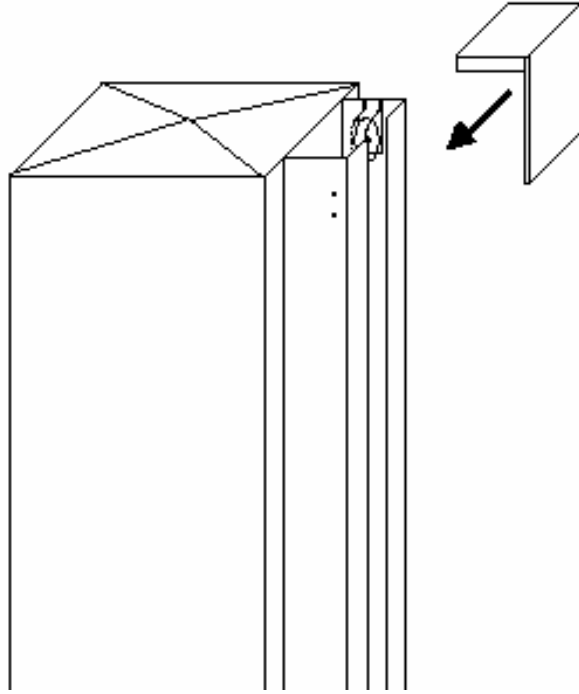
3.d



3.c Carefully slip the carriage/fixture assembly up and into the bottom of the rail(a). Be sure to keep tension on the cable to ensure that the brake is in the proper position as the carriage enters the rail. When tension is released the carriage/fixture assembly should hold itself in the rail if the brake is in the proper position.

3.d Mount box at bottom or Retropole. Insert cable in the hole at the top of the box and behind guide bar and spool(b). Thread the end of the cable thru the holes on the right side of spool, and fasten to the mounting bracket on the outside of the spool. (see instructions in box) Wind the cable on the spool to take up the slack.

4.



4 Install the Retropole cap (RC-1).

Retropole is ready to re-energize and operate. See operating instructions.

www.retropole.com

© 2005
Retropole, LLC
Irving, TX